

# RESOL VA300

## Thermally driven 3 port valve

### Technical data

#### Electrical

Degree of protection IP30  
Insulation class II  
Operating time: 3 min  
Supply voltage 230v +-10%, 50-60Hz  
Power consumption 5VA  
Environmental temperature 75°C max

#### Valve

Rated temperature 120°C, short term 140°C  
Housing . brass  
Seal . EPDM  
Max pressure 10 bar  
Thread ¾+BSP



N.B The actuator may differ from that shown but has equal functionality

### Copyright and limited liability

This operating manual including all parts is copyright by RESOL - Elektronische Regelungen GmbH. A use without agreement from RESOL is forbidden, especially copies, translations and saves in electronic systems. Publisher: RESOL - Elektronische Regelungen GmbH

This manual is correct to the best of our knowledge, but we reserve the right to make changes. Texts and drawings are only for examples. The starting point of your project should be your own calculations and planning in line with appropriate regulations. No liability can be accepted.

### 1.1 Installation

The valve is delivered with a screw cap for manual operation (see section 2). To fit the actuator, first remove the screw cap and keep if required for future use. Attach the actuator to the valve and secure with the knurled nut. The actuator can be installed in any position, but it is recommended to install the actuator above the pipework so any trickling water cannot impair the operation of the system.

#### 1.1.1 Pipework Connections

The cast valve body is marked I, II, III. The ports are:

- I. Inlet
- II. Normally closed outlet - connects to inlet when valve is energised
- III. Normally open outlet - connects to inlet when valve is NOT energised

### 1.2 Electrical connection

The actuator is supplied with a 2 core connection lead approx. 1m long. Connect Live (L) to brown wire, blue to neutral (N) in a suitable terminal joint box. When using several valves in one solar installation it is important to use the same electrical phase for all. Once the electrical connection is complete the actuator is ready for use.

## 2. Manual / Automatic operation

N.B. Some valves have a different actuator without the manual override lever. For manual operation, simply unscrew the actuator to cause the valve to divert.

The actuator has a manual operation lever that can be moved using a screwdriver or a coin.



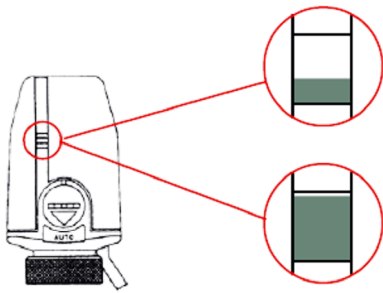
**Automatic working:** The actuator moves the valve automatically when voltage is applied. This position is required for the normal use.



**Manual working:** The valve is opened, irrespective of actuator status. This position enables easier system commissioning and can be used as a manual override during power failure.

### 2.2 Valve status window

The valve status can be seen through the window on the front side of the actuator. It shows how far the actuator is opened. Note the valve operating time is approx. 3 minutes.



#### Closed position

The red marker is only visible on the bottom; the actuator keeps the valve closed.

#### Open position

The red marker fills the complete window; the actuator keeps the valve open.

## 3. Pressure drop

